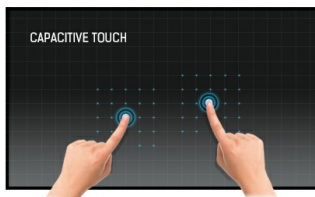


Open Frame PCAP 30-point Touch monitor with AG coating equipped with a foam seal finish for seamless integration

The ProLite TF3215MC-B2AG uses PCAP Touch technology and is built into an eye-catching bezel with edge-to-edge anti-glare coated glass drastically reducing ambient reflections in high-brightness environments without compromising the sharpness and clarity of the image. The rugged bezel equipped with a foam seal finish supports seamless integration into kiosks and provides IP65 rating resulting in dust and water resistance from the front making it perfect for high use public facing applications. Landscape and portrait orientation ensures flexible mounting possibilities in almost any installation. The TF3215MC-B2AG is the ideal solution for kiosk integrators, industrial environments, control rooms and interactive multimedia.



Touch technology - Capacitive

This technology uses a sensor-grid of micro-fine wires integrated into the glass that covers the screen. Touch is detected because electrical characteristics of the sensor grid change when human finger is placed on the glass. Thanks to the glass overlay this technology is highly durable, and the touch function remains unaffected even if the glass is scratched. It offers perfect picture performance and will work with human finger (also latex gloved) and stylus-pen.



Foam Seal

A foam seal finish (8mm) around the monitor ensures seamless integration and optimal dust protection.

01 DISPLAY CHARACTERISTICS

| | |
|-------------------------|---|
| Design | Open Frame |
| Diagonal | 31.5", 80cm |
| Panel | VA, Anti-Glare coating |
| Native resolution | 1920 x 1080 (2.1 megapixel Full HD) |
| Aspect ratio | 16:9 |
| Panel brightness | 500 cd/m ² |
| Brightness | 425 cd/m ² with touch |
| Light transmittance | 85% |
| Static contrast | 3000:1 with touch |
| Response time (GTG) | 8ms |
| Viewing zone | horizontal/vertical: 178°/178°, right/left: 89°/89°, up/down: 89°/89° |
| Colour support | 16.7mln 8bit |
| Horizontal Sync | 30 - 68kHz |
| Viewable area W x H | 698.4 x 392.8mm, 27.5 x 15.5" |
| Pixel pitch | 0.3637mm |
| Bezel colour and finish | black |
| Reommended usage | retail |

02 TOUCH

| | |
|-----------------------------|---|
| Touch technology | projective capacitive |
| Touch points | 30 (HID, only with supported OS) |
| Touch accuracy | +/- 2mm |
| Touch method | finger, glove (latex), capacitive stylus |
| Touch interface | USB |
| Supported operating systems | All iiyama monitors are Plug & Play and compatible with Windows and Linux. For details regarding the supported OS for the touch models, please refer to the driver instruction file available in the downloads section. |
| Through-Glass | 6mm |

03 INTERFACES / CONNECTORS / CONTROLS

| | |
|----------------------|---------------------------|
| Analog signal input | VGA x1 |
| Digital signal input | HDMI x1 DisplayPort x1 |
| HDCP | yes |

04 FEATURES

| | |
|------------------------------|---|
| Extra | Touch Through-Glass, Anti-glare coating |
| Kiosk mode | yes |
| Max. non-stop operating time | 24/7 |
| Glass hardness | 6H |
| 60950 Ball drop test | yes |
| Impact testing | IK-7 |
| Water and dust protection | IP65 (front) |
| Housing (bezel) | metal |

| | |
|------------------|-----|
| Water tight seal | yes |
| OSD key lock | yes |

05 GENERAL

| | |
|-----------------|--|
| OSD languages | EN, DE, FR, ES, IT, CN, JP |
| Control buttons | Menu, Scroll up/ Brightness, Scroll down/ Contrast, Select, Power |
| User controls | contrast, brightness, auto adjust, H.position, V.position, phase, OSD H.position, OSD V.position, OSD timeout, reset, input select, OSD language, colour temperature, sharpness, touch switch (normal, glove, through-glass) |
| Plug&Play | DDC2B |

06 MECHANICAL

| | |
|-----------------------------|---------------------|
| Orientation | landscape, portrait |
| Fanless design | yes |
| VESA mounting | 200 x 200mm |
| Cable management system | cable cover |
| Operation temperature range | 0°C - 40°C |
| Storage temperature range | - 20°C - 60°C |
| MTBF | 50000 hours |

07 ACCESSORIES INCLUDED

| | |
|-------------|---------------------------------|
| Cables | power, USB, HDMI |
| Guides | quick start guide, safety guide |
| Cable cover | yes |

08 POWER MANAGEMENT

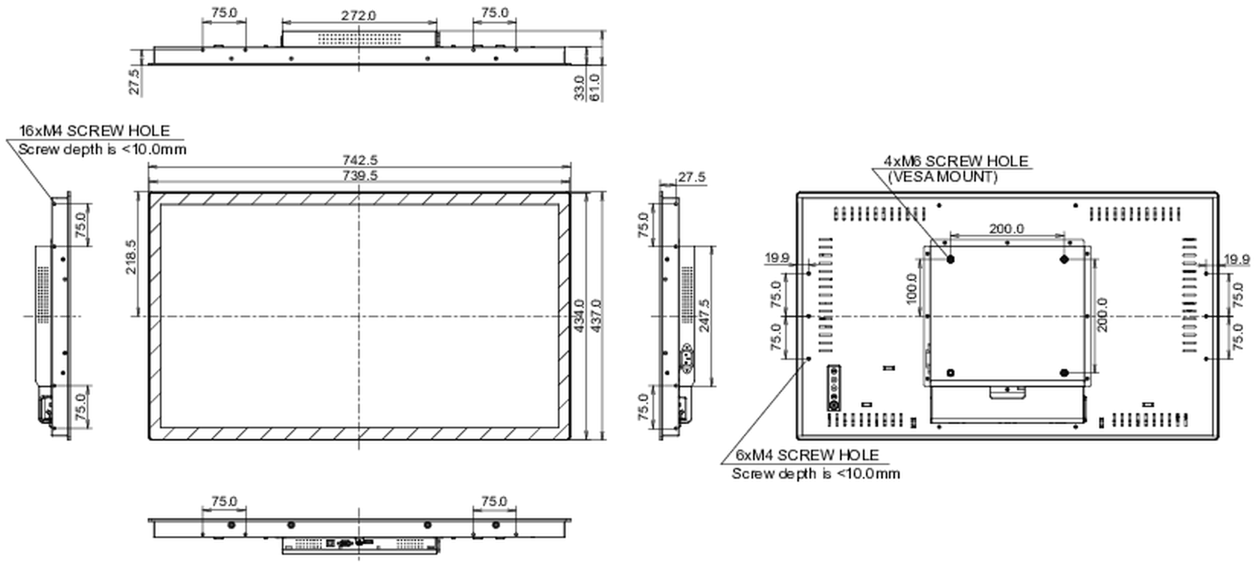
| | |
|-------------------|---|
| Power supply unit | internal |
| Power supply | AC 100 - 240V, 50/60Hz |
| Power usage | 32W typical, 1.5W stand by, 0.3W off mode |

09 SUSTAINABILITY

| | |
|---|------------------|
| Energy efficiency class (Regulation (EU) 2017/1369) | F |
| REACH SVHC | above 0.1%: Lead |

10 DIMENSIONS / WEIGHT

| | |
|------------------------------|--------------------|
| Product dimensions W x H x D | 745.5 x 437 x 61mm |
| Box dimensions W x H x D | 890 x 630 x 155mm |
| Weight (without box) | 10kg |
| Weight (with box) | 12.85kg |
| EAN code | 4948570123674 |



All trademarks and registered trademarks acknowledged. E & O E. Specification subject to change without notice. All LCD's comply with ISO-9241-307:2008 in connection with pixel defects.

© IYAMA CORPORATION. ALL RIGHTS RESERVED